



Installing the new e-Warranty Software

To install the e-Warranty software you need at least the following operating systems:

For MAC:

- OSX 10.6 or a later version

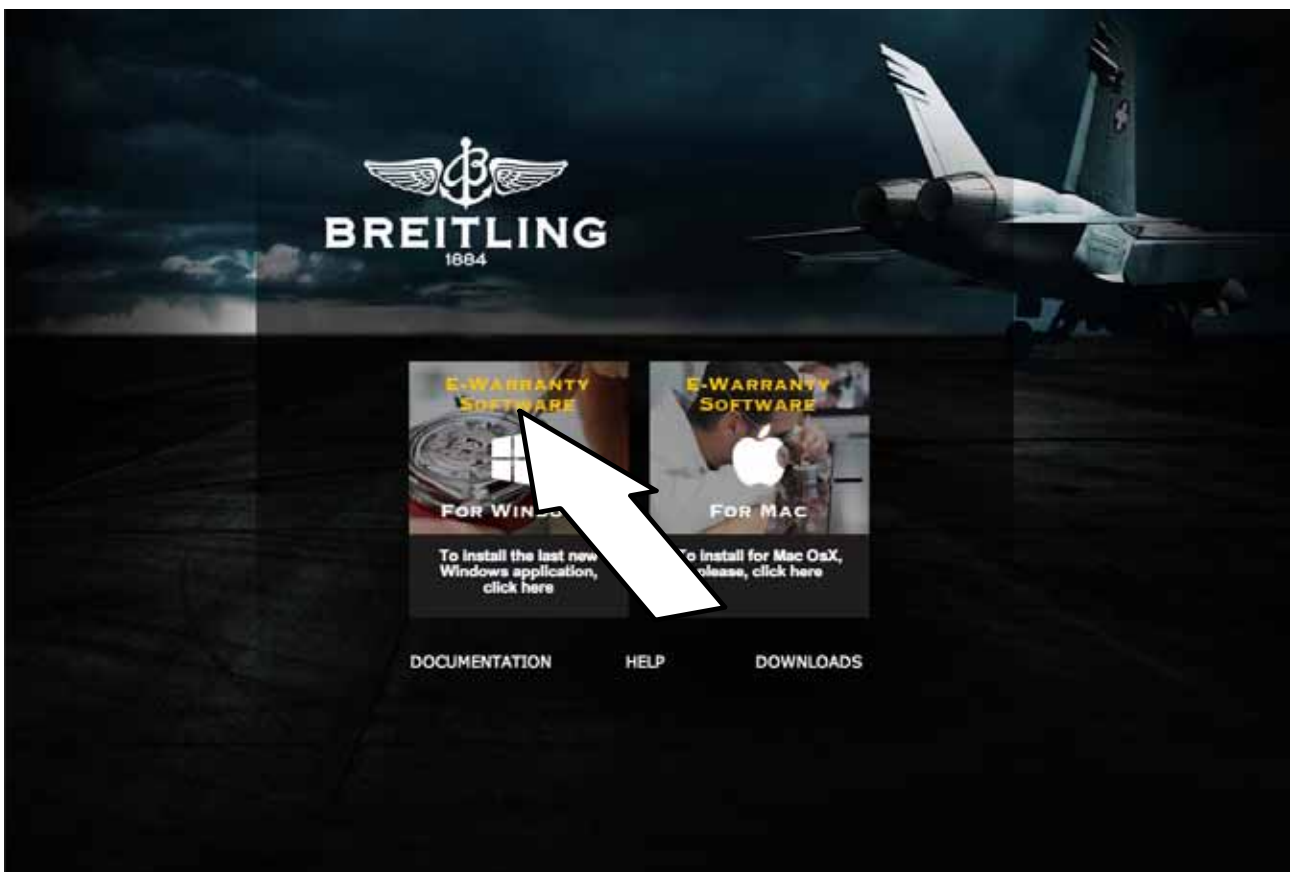
For WINDOWS

- Operating system Windows XP (with Service Pack 3) or a later version
- Microsoft DotNet Framework 3.5 - SP1

Enter the following address in your Internet browser:

<https://ewarranty.breitling.com/>

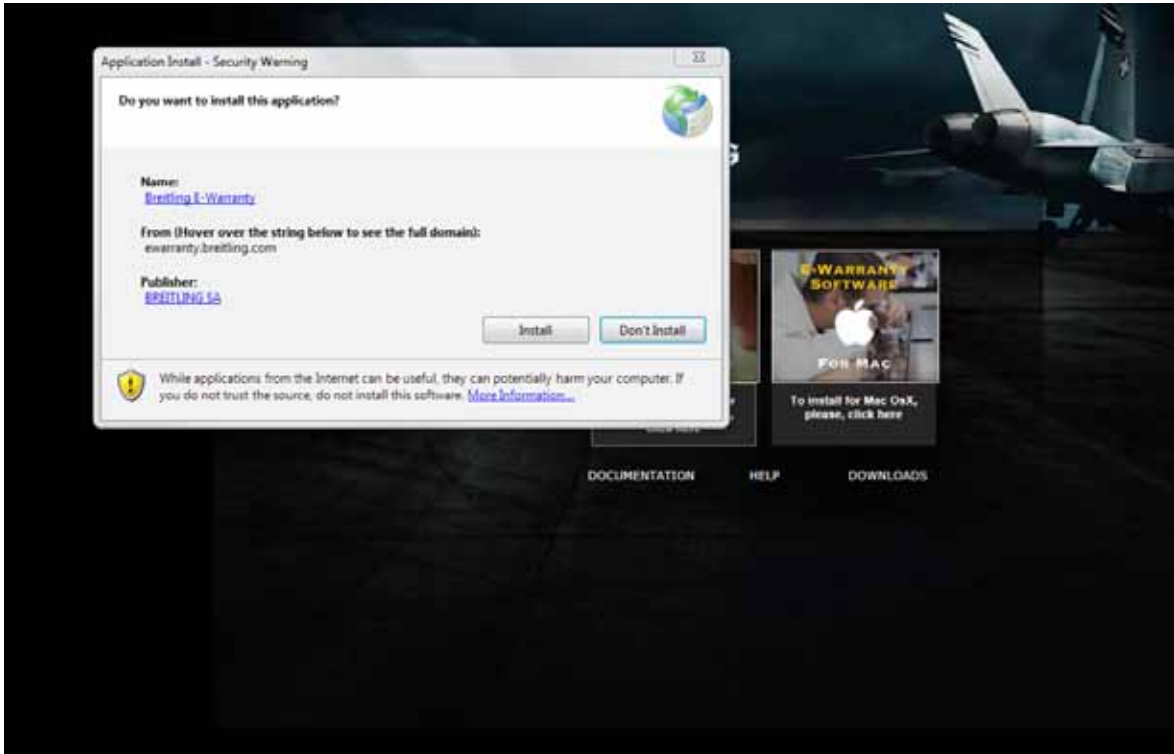
The following page will be called up:



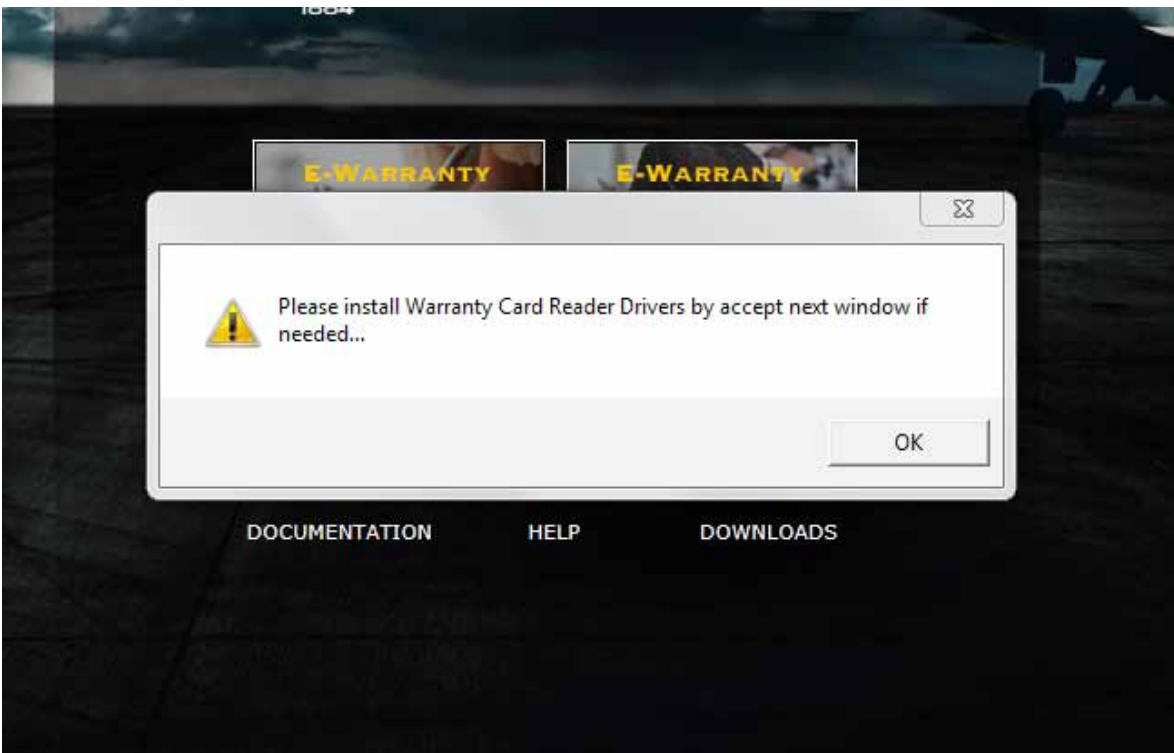
Click "install" to download and install the application.



If you are prompted to allow the installation, consent to the request.



When the installation is complete, the following window will appear:



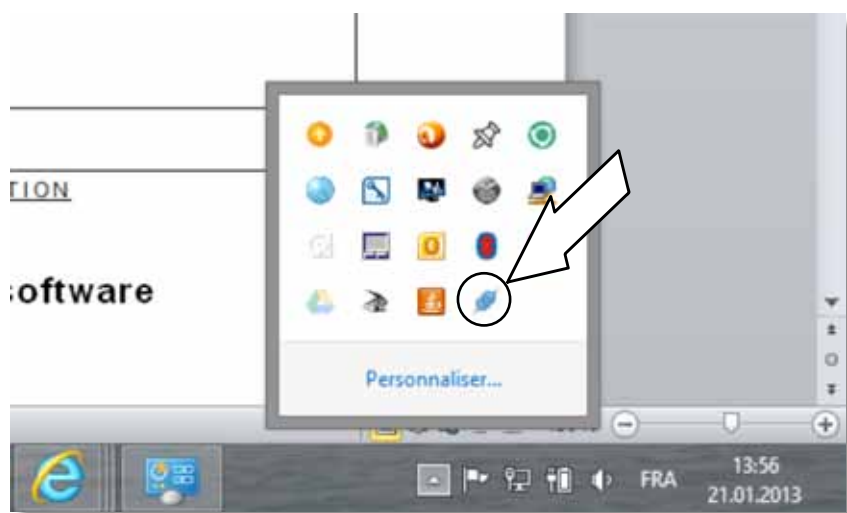
Click "OK" to confirm and install the driver for the card reader.



The software is launched automatically when starting the computer. This icon will appear in your toolbar.



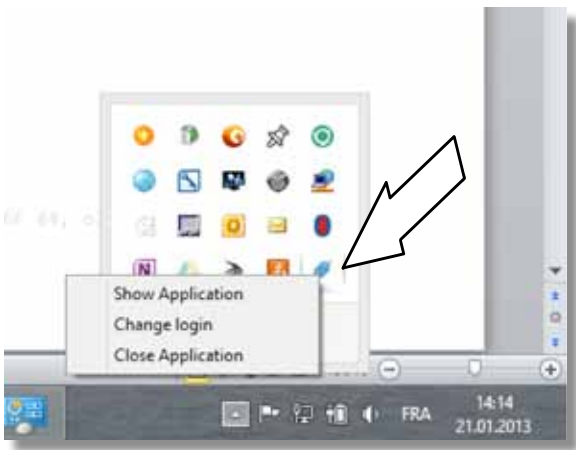
If there are many icons in your toolbar, you will find the e-Warranty icon by opening the notification zone, as on the example below.



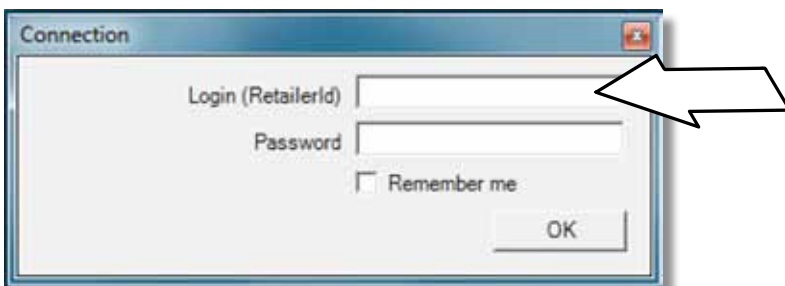


When connecting the card reader to the computer, the software opens automatically within 30 seconds.

If not, right-click on the e-Warranty icon and select "Show application" in the popup menu.



You will be asked for your login and password.
Tick the "Remember me" check box for your next connection.

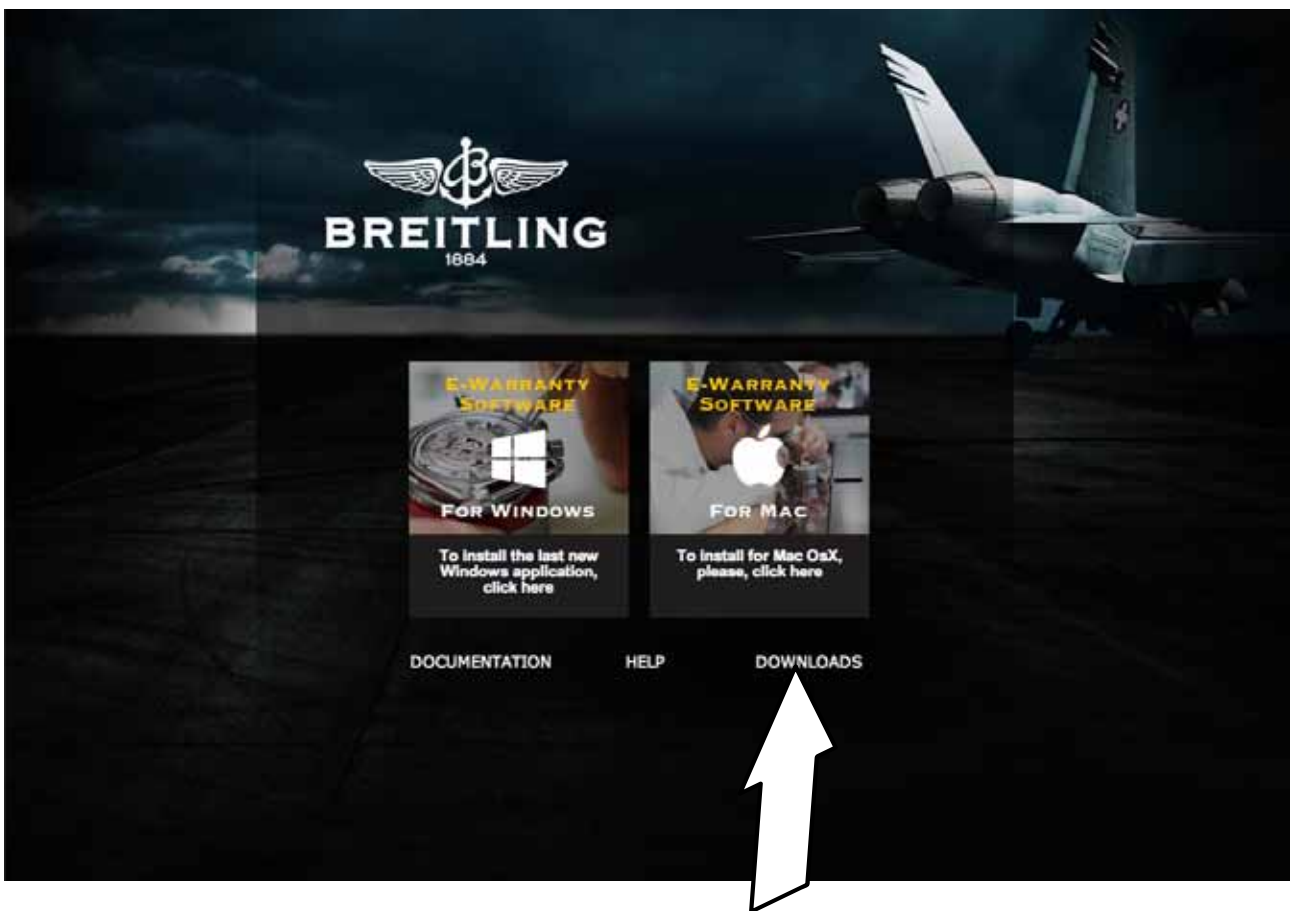




In case the computer does not identify your card reader when you connect it to the computer, the icon will stay disconnected. The driver was not installed.

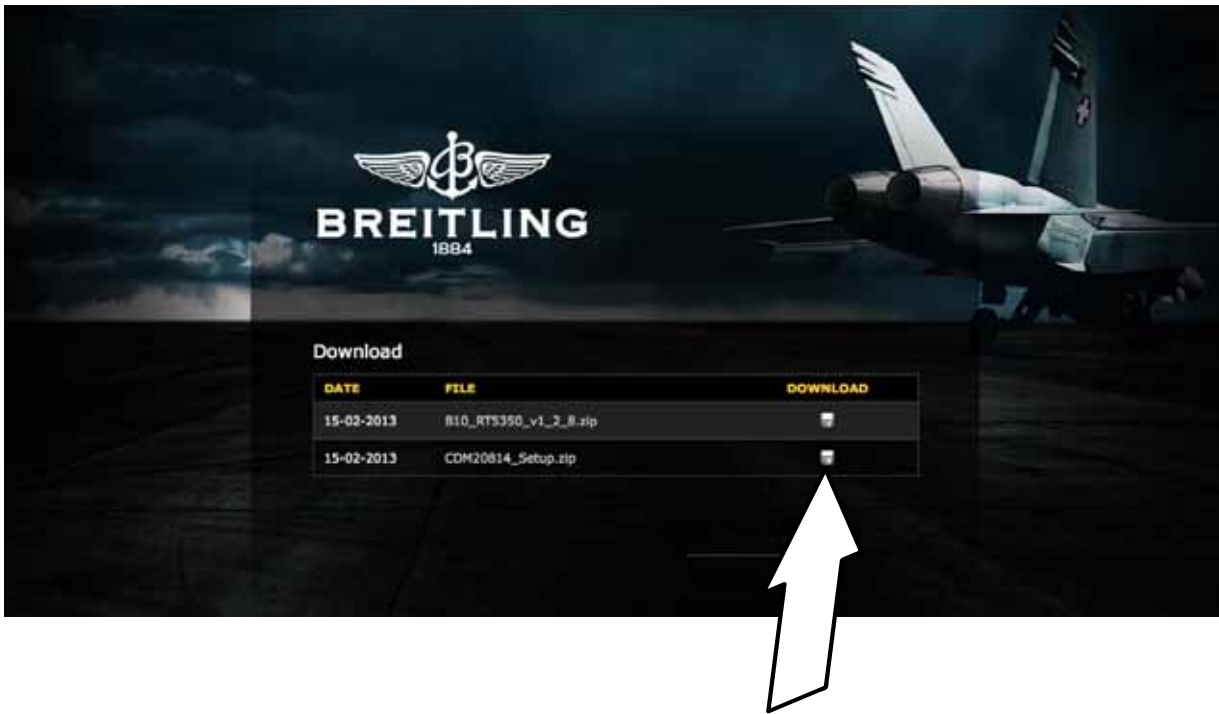


In this case download the required drivers on the following page by selecting "DOWNLOADS".



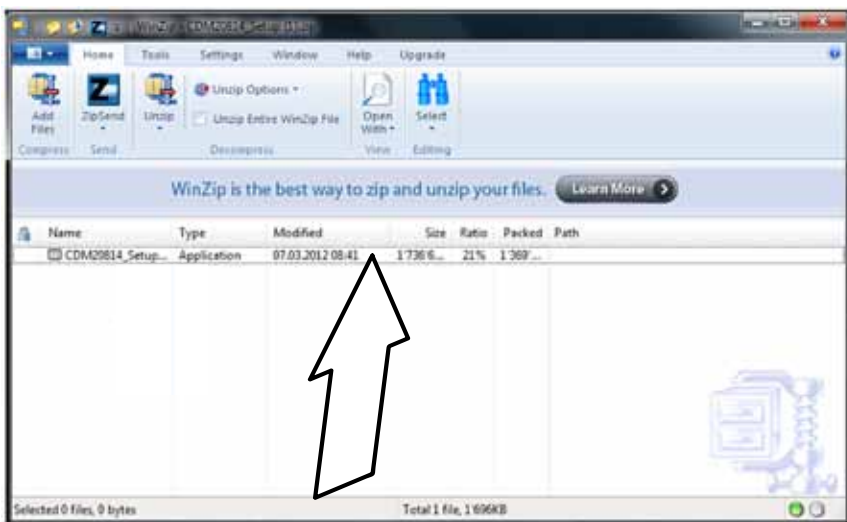


Open the file pointed out by the arrow.



To install the drivers double click on the line pointed out by the arrow.

The drivers will be downloaded on to the computer.





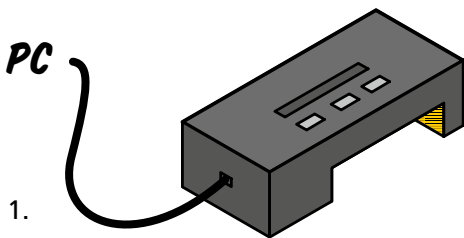
Update Software

If the version of the software installed is no longer up to date, this button will appear in red letters in the upper right corner: "New version available. Click here to install." Click the button, and the update will be installed automatically.



Upgrade Firmware

To install the latest version of the firmware* for the card reader, connect the reader to the computer and go to "Upgrade Firmware" in the program.



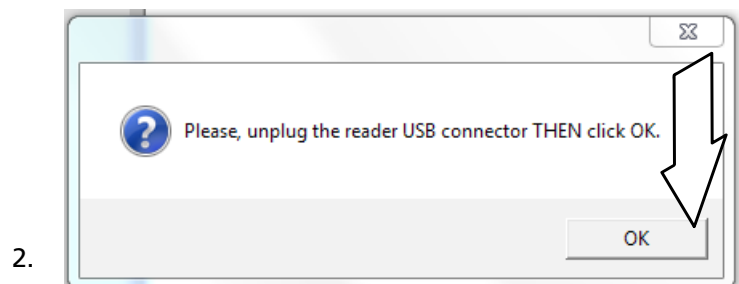
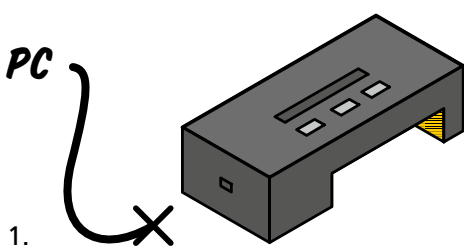
2. Click "Update" to start the process.

*The firmware is the software installed in the card reader.

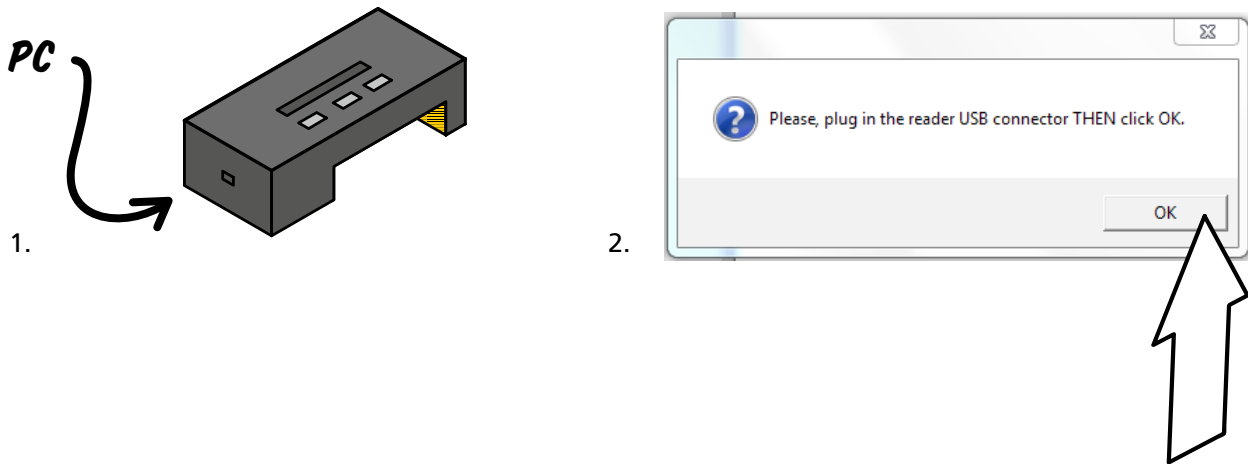
The following message will appear:



Disconnect the connection between the card reader and the computer and THEN click "OK".



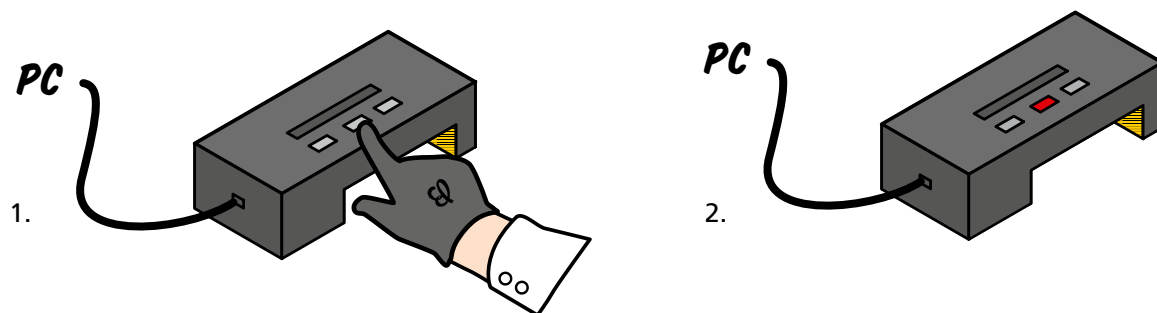
When the next message appears, reconnect the card reader and THEN click "OK".



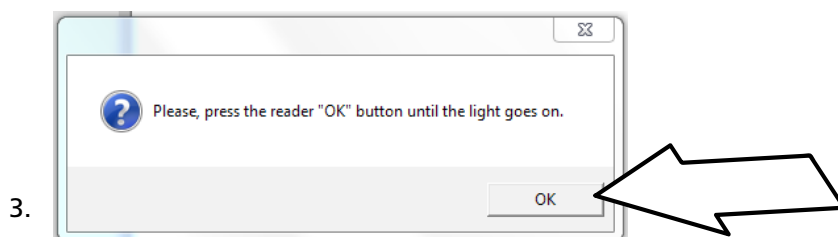
In a few seconds you will see another window:



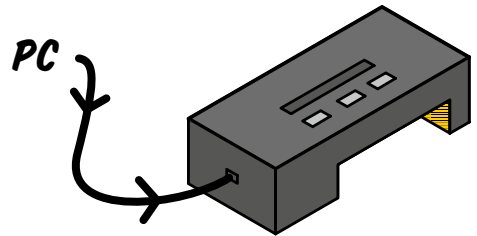
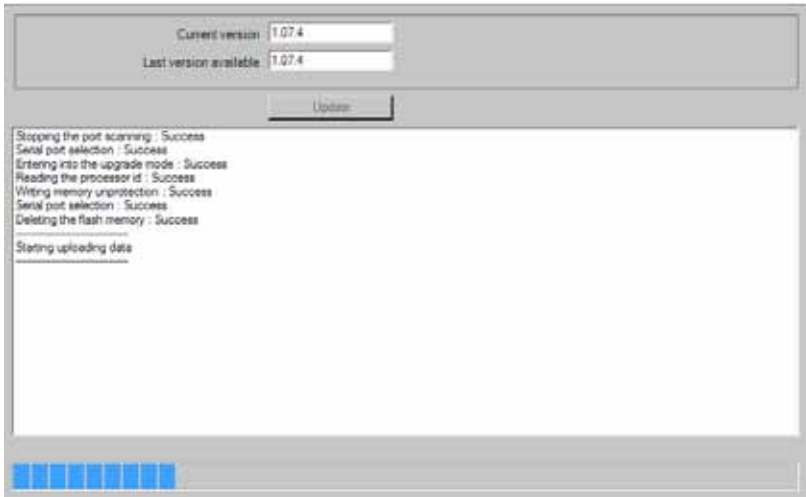
Press and hold depressed the OK button for the card reader until it lights up red.



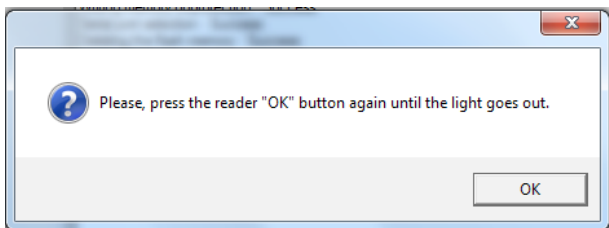
THEN click "OK".



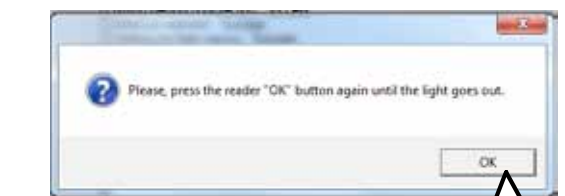
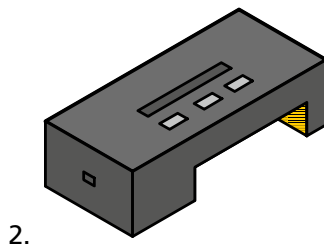
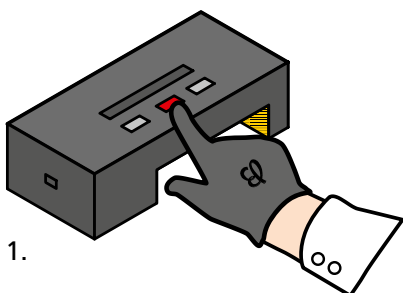
The program will then begin the installation of the update. Do not under any circumstances disconnect the connection, and wait until the loading process is completely finished.



The following window will appear:



Press and hold depressed the OK button for the card reader until the red light goes off and THEN click "OK".



The upgrade of the firmware is now complete.